

Podrobno je položaj merskih mrež in zasnova monitoringa opisana v preteklih poročilih.

4. PREGLED REZULTATOV MONITORINGA NA PLAZU LAZE

V nadaljevanju podajamo rezultate meritev in interpretacijo rezultatov, predvsem v obdobju 2016-2017.

4.1. GEODETSKA MREŽA

V letu 2017 je bila geodetska meritev celotne mreže izvedena 21.7.2017. Primerjamo rezultate iz leta 2016, torej v obdobju nekaj več kot pol leta (198 dni). Zbrani so v spodnji razpredelnici, grafično pa prikazani na sliki 2 in v prilogi 1. V povprečju so se premiki v enem letu povečali za 59 mm v YX ravnini in v 69,8 mm v prostoru, kar je približno primerljivo z vrednostmi v obdobju 2015-2016 (v XY ravnini 58,6 in 88,5 mm v prostoru).

oznaka	meritev 24.11.2016			meritev 10.6.2017			razlika meritev 1.2016 - 10.6.2017 (mm)			Skupni 2D (mm)	Skupni 3D (mm)
	GK Y	GK X	h (m)	GK Y	GK X	h (m)	dY	dX	dh		
1/1	428.860,624	112.958,764	977,610	428.860,624	112.958,764	977,608	0	0	-2	0,0	2,0
1/2	428.909,484	112.942,167	972,974	428.909,475	112.942,148	972,973	-9	-19	-1	21,0	21,0
1/3	428.939,134	112.931,014	971,445	428.939,127	112.931,000	971,443	-7	-14	-2	15,7	15,8
1/4	428.959,224	112.923,902	969,705	428.959,226	112.923,894	969,702	2	-8	-3	8,2	8,8
1/5	428.974,280	112.918,166	967,316	428.974,279	112.918,162	967,309	-1	-4	-7	4,1	8,1
1/6	428.997,941	112.908,221	965,197	428.997,941	112.908,220	965,194	0	-1	-3	1,0	3,2
1/7	429.031,325	112.889,931	966,732	429.031,327	112.889,929	966,730	2	-2	-2	2,8	3,5
2/1	428.796,563	112.370,569	866,828	428.796,568	112.370,559	866,816	5	-10	-12	11,2	16,4
2/2	428.843,518	112.377,177	866,943	428.843,491	112.377,144	866,969	-27	-33	26	42,6	49,9
2/3	428.860,203	112.376,063	868,365	428.860,148	112.376,028	868,355	-55	-35	-10	65,2	66,0
2/4	428.853,244	112.476,645	890,707	428.853,220	112.476,562	890,727	-24	-83	20	86,4	88,7
2/5	428.897,853	112.477,288	888,181	428.897,833	112.477,240	888,201	-20	-48	20	52,0	55,7
2/6	428.933,871	112.479,822	888,164	428.933,876	112.479,782	888,187	5	-40	23	40,3	46,4
2/7	428.914,564	112.378,924	866,691	428.914,546	112.378,882	866,691	-18	-42	0	45,7	45,7
2/8	428.960,429	112.373,763	868,008	428.960,429	112.373,688	868,021	0	-75	13	75,0	76,1
2/9	429.057,746	112.371,962	862,491	429.057,735	112.371,913	862,491	-11	-49	0	50,2	50,2
2/10	429.133,531	112.374,886	870,511	429.133,506	112.374,869	870,495	-25	-17	-16	30,2	34,2
3/1	428.777,942	112.199,166	843,932	428.777,966	112.199,153	843,932	24	-13	0	27,3	27,3
3/2	428.802,214	112.198,421	845,747	428.802,205	112.198,369	845,767	-9	-52	20	52,8	56,4
3/3	428.831,870	112.197,523	844,971	428.831,900	112.197,445	844,971	30	-78	0	83,6	83,6
3/4	428.894,940	112.195,844	845,384	428.894,950	112.195,842	845,334	10	-2	-50	10,2	51,0
3/5	428.937,182	112.195,739	842,606	428.937,181	112.195,719	842,600	-1	-20	-6	20,0	20,9
3/6	429.034,993	112.201,558	847,422	429.034,975	112.201,532	847,422	-18	-26	0	31,6	31,6
4/1	428.725,122	112.092,694	832,189	428.725,113	112.092,681	832,186	-9	-13	-3	15,8	16,1
4/2	428.765,760	112.100,416	831,912	428.765,745	112.100,396	831,899	-15	-20	-13	25,0	28,2
4/3	428.834,784	112.112,317	838,840	428.834,765	112.112,280	838,842	-19	-37	2	41,6	41,6
4/4	428.943,276	112.101,485	830,827	428.943,273	112.101,467	830,821	-3	-18	-6	18,2	19,2
4/5	429.087,324	112.101,212	818,004	429.087,345	112.101,191	817,990	21	-21	-14	29,7	32,8
4/6	429.145,256	112.104,947	816,580	429.145,256	112.104,943	816,585	0	-4	5	4,0	6,4
4/7	428.990,383	112.040,459	822,515	428.990,352	112.040,427	822,521	-31	-32	6	44,6	45,0

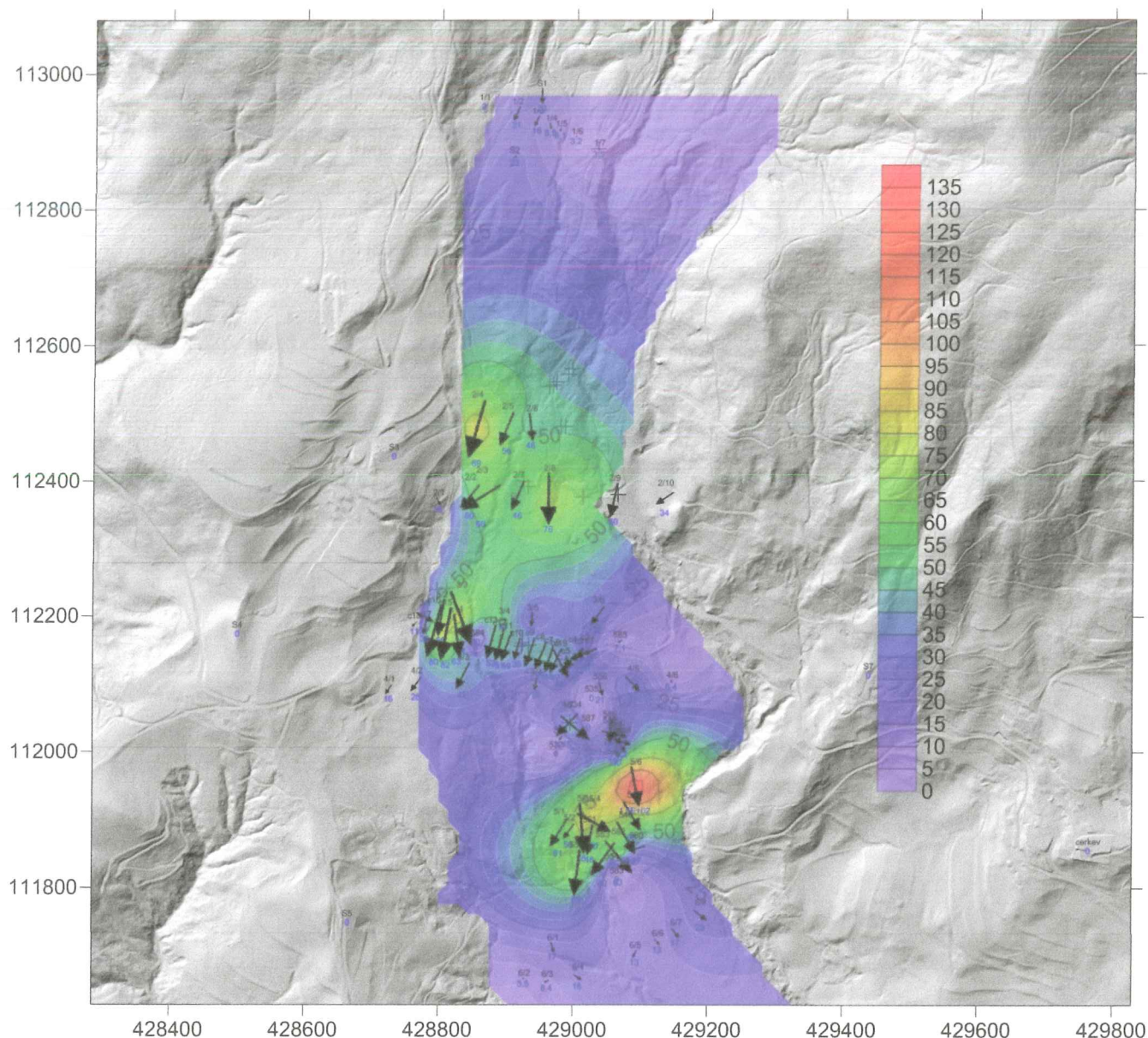
5/1	428.978,399	111.881,608	776,159	428.978,374	111.881,568	776,121	-25	-40	-38	47,2	60,6
5/2	428.993,691	111.883,754	773,011	428.993,676	111.883,733	772,961	-15	-21	-50	25,8	56,3
5/3	429.013,182	111.887,970	773,050	429.013,188	111.887,897	773,001	6	-73	-49	73,2	88,1
5/4	429.031,160	111.896,455	770,306	429.031,209	111.896,429	770,248	49	-26	-58	55,5	80,3
5/5	429.087,678	111.906,139	772,165	429.087,703	111.906,098	772,119	25	-41	-46	48,0	66,5
5/6	429.091,991	111.949,877	778,985	429.092,002	111.949,821	778,849	11	-56	-136	57,1	147,5
6/1	428.970,011	111.712,744	748,325	428.970,015	111.712,730	748,334	4	-14	9	14,6	17,1
6/2	428.927,131	111.666,936	743,869	428.927,129	111.666,937	743,864	-2	1	-5	2,2	5,5
6/3	428.961,805	111.662,878	738,333	428.961,799	111.662,875	738,338	-6	-3	5	6,7	8,4
6/4	429.007,435	111.669,328	737,143	429.007,447	111.669,321	737,150	12	-7	7	13,9	15,6
6/5	429.092,356	111.703,231	730,852	429.092,351	111.703,221	730,858	-5	-10	6	11,2	12,7
6/6	429.125,713	111.721,174	729,044	429.125,721	111.721,167	729,051	8	-7	7	10,6	12,7
6/7	429.153,068	111.734,148	729,064	429.153,078	111.734,135	729,070	10	-13	6	16,4	17,5
6/8	429.189,682	111.760,520	727,536	429.189,700	111.760,506	727,531	18	-14	-5	22,8	23,3
c1	429.024,069	112.148,491	833,940	429.024,050	112.148,483	833,950	-18,9	-8	10	20,5	22,8
c2	429.017,123	112.146,111	834,076	429.017,093	112.146,100	834,062	-30	-11	-14	32,0	34,9
c3	429.007,917	112.142,135	834,075	429.007,890	112.142,124	834,059	-27	-11	-16	29,2	33,3
c4	428.998,717	112.138,083	833,926	428.998,688	112.138,053	833,903	-29	-30	-23	41,7	47,6
c5	428.988,236	112.134,568	833,840	428.988,234	112.134,553	833,840	-2	-15	0	15,1	15,1
c6	428.972,897	112.135,110	834,393	428.972,880	112.135,076	834,375	-17	-34	-18	38,0	42,1
c7	428.963,110	112.138,029	834,857	428.963,098	112.137,991	834,836	-12	-38	-21	39,8	45,0
c8	428.950,376	112.142,095	835,546	428.950,360	112.142,056	835,524	-16	-39	-22	42,2	47,5
c9	428.934,286	112.147,109	836,657	428.934,272	112.147,068	836,640	-14	-41	-17	43,3	46,5
c10	428.915,155	112.152,368	837,809	428.915,147	112.152,337	837,825	-8	-31	16	32,0	35,8
c11	428.899,649	112.156,592	838,706	428.899,634	112.156,549	838,688	-15	-43	-18	45,5	49,0
c12	428.889,657	112.159,291	839,376	428.889,644	112.159,244	839,361	-13	-47	-15	48,8	51,0
c13	428.876,821	112.162,789	840,344	428.876,808	112.162,741	840,325	-13	-48	-19	49,7	53,2
c14	428.825,831	112.171,731	842,661	428.825,839	112.171,669	842,661	8	-62	0	62,5	62,5
c15	428.809,477	112.174,217	843,339	428.809,462	112.174,141	843,312	-15	-76	-27	77,5	82,0
c16	428.792,260	112.178,282	843,772	428.792,239	112.178,208	843,749	-21	-74	-23	76,9	80,3
c17	428.778,762	112.184,983	843,983	428.778,758	112.184,961	843,963	-4	-22	-20	22,4	30,0
c18	428.763,171	112.189,210	844,435	428.763,164	112.189,203	844,431	-7	-7	-4	9,9	10,7
c19	428.980,426	112.130,332	834,184	428.980,448	112.130,292	834,182	22	-40	-2	45,7	45,7
zid 1	429.059,091	112.001,450	804,544	429.059,107	112.001,448	804,544	16	-2	0	16,1	16,1
zid 2	429.064,781	112.006,864	804,551	429.064,784	112.006,834	804,551	3	-30	0	30,1	30,1
zid 3	429.068,861	112.010,776	804,552	429.068,877	112.010,754	804,552	16	-22	0	27,2	27,2
zid 4	429.073,641	112.015,192	804,542	429.073,662	112.015,185	804,545	21	-7	3	22,1	22,3
559	429.005,988	111.822,954	752,996	429.005,980	111.822,888	752,978	-8	-66	-18	66,5	68,9
553	429.044,697	111.842,873	752,936	429.044,663	111.842,826	752,920	-34	-47	-16	58,0	60,2
554	429.058,884	111.839,886	752,422	429.058,884	111.839,886	752,400	0	0	-22	0,0	22,0
583	429.066,050	111.818,901	748,040	429.066,050	111.818,901	748,040	0	0	0	0,0	0,0
582	429.068,327	111.845,681	754,119	429.068,366	111.845,635	754,101	39	-46	-18	60,3	62,9
560	429.094,975	111.858,467	756,950	429.094,952	111.858,460	756,938	-23	-7	-12	24,0	26,9
546	429.078,858	111.873,997	762,713	429.078,885	111.873,951	762,691	27	-46	-22	53,3	57,7
551	429.025,147	111.871,218	762,408	429.025,140	111.871,174	762,389	-7	-44	-19	44,6	48,4
532	428.974,440	112.003,996	815,784	428.974,440	112.003,996	815,784	0	0	0	0,0	0,0
531	428.981,383	112.021,493	820,028	428.981,378	112.021,487	820,036	-5	-6	8	7,8	11,2
534	429.002,222	112.036,040	820,606	429.002,263	112.036,006	820,606	41	-34	0	53,3	53,3
535	429.027,276	112.086,530	817,867	429.027,276	112.086,530	817,867	0	0	0	0,0	0,0
536	429.039,959	112.094,170	817,083	429.039,964	112.094,150	817,083	5	-20	0	20,6	20,6
587	429.022,527	112.043,046	816,585	429.022,527	112.043,046	816,585	0	0	0	0,0	0,0
588	429.054,718	112.027,766	809,954	429.054,742	112.027,760	809,960	24	-6	6	24,7	25,5

589	429.061,790	112.020,158	808,866	429.061,811	112.020,148	808,863	21	-10	-3	23,3	23,5
590	429.067,041	112.025,191	809,594	429.067,063	112.025,187	809,592	22	-4	-2	22,4	22,4
586	429.054,223	112.031,905	814,033	429.054,221	112.031,871	814,035	-2	-34	2	34,1	34,1
585	429.068,889	112.163,334	836,447	429.068,884	112.163,331	836,443	-5	-3	-4	5,8	7,1
584	428.857,344	112.168,618	842,361	428.857,344	112.168,618	842,361	0	0	0	0,0	0,0

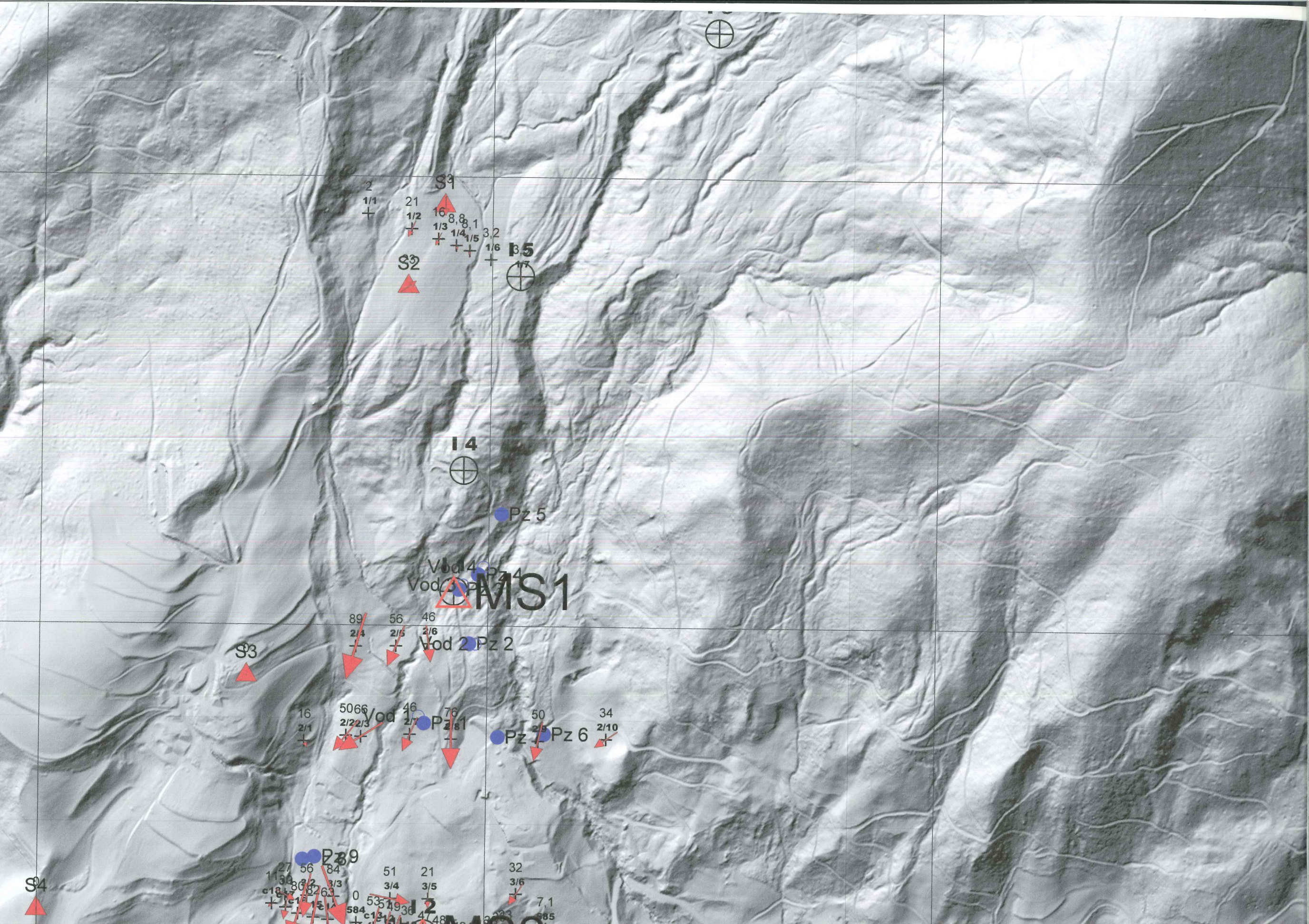
povprečje 32,0 37,9

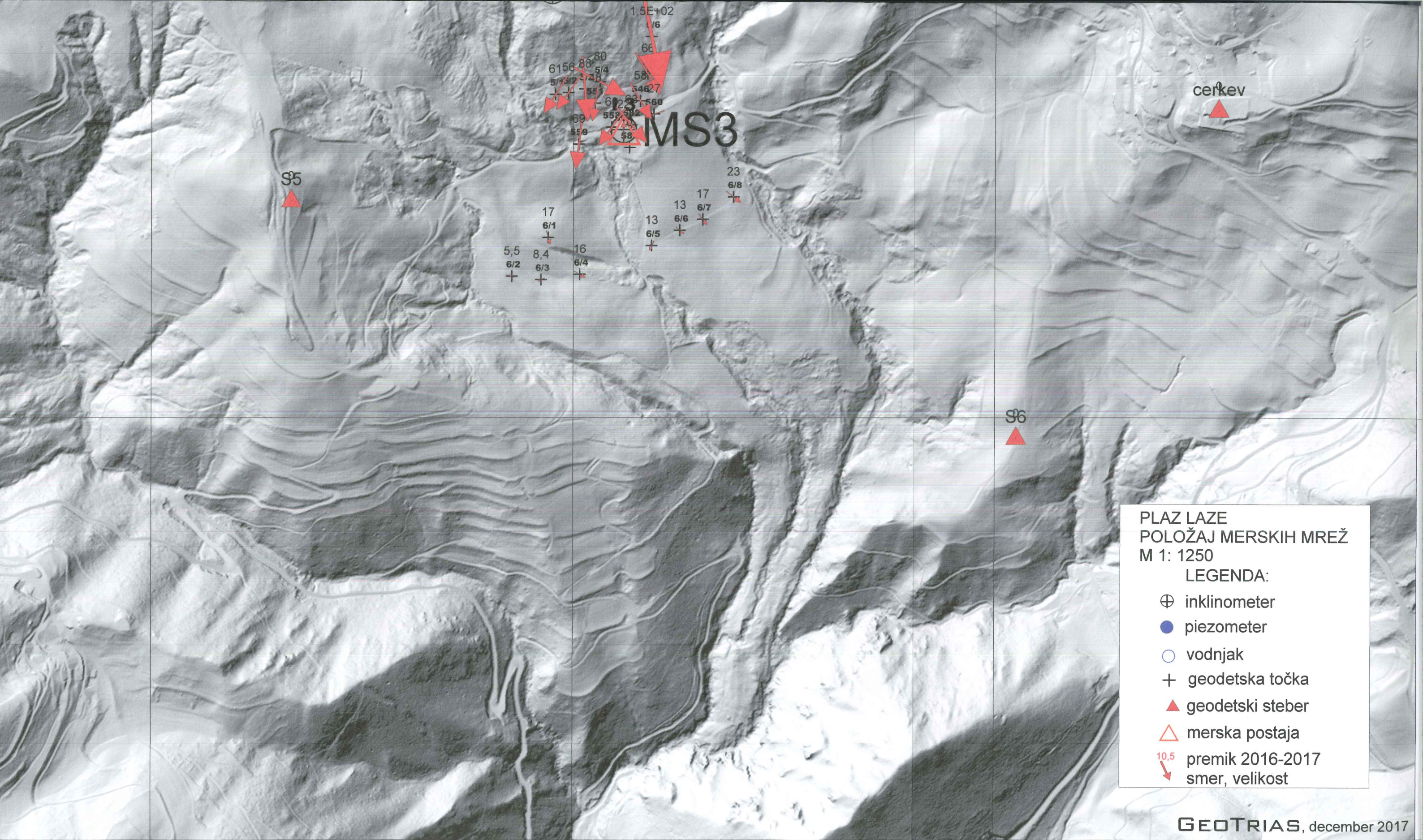
povprečje na letni ravni 59,1 69,8

Opazujemo nekatere izrazite zgostitve premikov: v vasi Laze, nad domačijo Likar in pod stanovanjsko hišo Laze 2.



Slika 2: Izolinije premikov in smeri premikov geodetskih točk v obdobju 2016-2017.





MS3

cerkev

PLAZ LAZE
POLOŽAJ MERSKIH MREŽ
M 1: 1250

LEGENDA:

- ⊕ inklinometer
- piezometer
- vodnjak
- + geodetska točka
- ▲ geodetski steber
- △ merska postaja
- 10,5
↓ premik 2016-2017
smer, velikost

GEOTRIAS, december 2017

428500

429000

429500

430000